



84 H

MODEL H

A skid-mounted, horizontal cooler used in a variety of applications.

MODEL SPECIFICATIONS

- Fan diameters from 24" to 144".
- Single- and multi-fan configurations.
- Forced or induced draft.
- Electric motor or hydraulic drive configuration.
- Typical compression HP: 100-2,000.

MODEL H ADVANTAGES



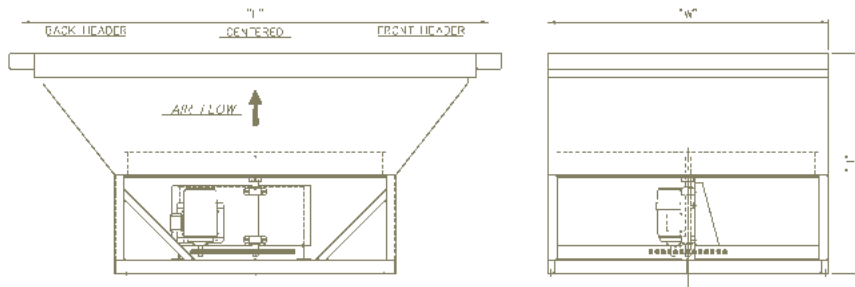
84 H with Optional Manually Operated Main Lowers and Additional Heating Coil

- Structural strength.
- Skid-mounted for an array of site conditions.
- Adaptable to a variety of fan drive types.
- Drives can be mounted to the internal substructure providing lower profile.
- Convenient accessibility to all components: fan, drive and bearings.



Plenum-Mounted Electric Drive on Model HR (Standard)

MODEL H

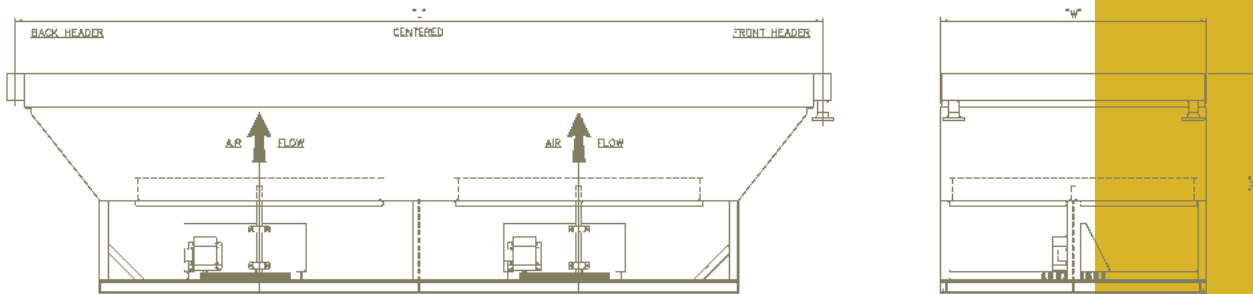


FAN DIAMETER	L	W	H	FAN DIAMETER	L	W	H	FAN DIAMETER	L	W	H
24	39	27	66	54	99	61	66	96	171-195	108	94
32	51	35	66	60	123	66	78	108	183-195	120-132	94
36	63	40	66	72	147	78	82	120	195-219	132-144	94
42	75	46	66	84	123-147	96	82	132	219-243	144	103
48	99	54	66	93	171-195	99	82	144	267	156	103

L = Length, W = Width, H = Height

*Dimensions shown in inches **Dimensions may vary for estimation only

MODEL 2H



FAN DIAMETER	L	W	H	FAN DIAMETER	L	W	H	FAN DIAMETER	L	W	H
24	75	27	66	54	147	81	66	96	291	120-132	94
32	99	35	66	60	147-171	96	78	108	363	120	94
36	99	52	66	72	147-243	96	82	120	363	132-144	103
42	123	58	66	84	291	96	82	132	363	156	103
48	147	64	66	93	363	99	94	144	483	168	105

L = Length, W = Width, H = Height

*Dimensions shown in inches **Dimensions may vary for estimation only

HARSCO INDUSTRIAL AIR-X-CHANGERS MODEL H

OPTIONAL FEATURES

- Cooler finish per customer specifications, including tint-to-match paint and galvanizing.
- Multi-speed drives or auto variable fans can provide superior degree of temperature control.
- Louvers (manual or automated) downstream of the cooling sections to control air flow for temperature control.
- Auxiliary louvers (manual or automated) located upstream of the cooling sections to provide additional protection in cold weather climates.
- Warm air recirculation systems available over the end or side of the unit to better control process outlet temperature in cold weather climates.
- Hailguard over cooling sections, independent or integral with shutters, to protect cooling sections.
- Low noise emission fans.
- Bug screens / lint screens over air intake to minimize external fouling of cooling sections.

MODEL H